

2020 MEMBER BENEFITS

GREATER BEECH GROVE CHAMBER OF COMMERCE

BeechGroveChamber.org





WORK SMART

SMALL BUSINESS LEARNING SERIES

Accounting Q&A
Customer Service Training
Cost Effective Marketing

Websites & SEO
Preparing a Budget
Small Business Retirement



SUCCEED

NONPROFIT LEARNING SERIES

Hosting Events
Social Media for Nonprofits
Recruit & Retain Volunteers

Fundraising
Program Evaluation
Create a Strategic Plan

• MEMBERSHIP BENEFITS •

SOMETHING FOR EVERYONE



ONLINE ANALYSIS

Membership includes an online business analysis.



ANNUAL JOB FAIR

We will host an annual job fair, provide the set up and handle the advertising!



NETWORKING

There are several different ways to meet new people, customers and partners.



NEW RESIDENT WELCOME BAGS

We hand out new resident welcome bags. Include your business information in them!



FESTIVALS AND OUTREACH EVENTS

The chamber hosts four signature events.



BUSINESS EXCELLENCE AWARDS

You and your business are eligible to receive an annual chamber recognition award.

★ MONTHLY LUNCHES ★

MEET EAT LEARN



Local Business Leader
The Art of Negotiation
State of the City
Hiring & Retention Panel
Branding & Design Panel

Emergency Preparedness
State of the Schools
Political Leaders Panel
Mental Health
Get Involved, Nonprofit

B E P R O D U C T I V E



CHAMBER EVENTS

UNITING THE COMMUNITY WITH LOCAL BUSINESS

Community Spring Fling - March 14, 2020

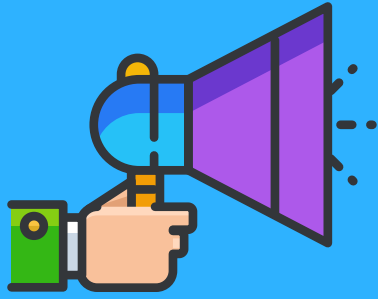
Job Fair - May 6, 2020

Music on Main - August 29, 2020

Annual Dinner - November 5, 2020

Small Business Saturday - November 28, 2020





PUT YOUR BUSINESS IN FRONT OF THOUSANDS POTENTIAL CLIENTS!

EVENT SPONSORSHIP OPPORTUNITIES

Sponsoring a chamber event is a great way to reach a wide, local audience. Your sponsorship isn't limited to event attendees, we will advertise prior to the event and even after the event! Each event has a variety of levels, each with their own benefits. For details please visit beechgrovechamber.org/INSERT or contact us!

SPRING FLING SPONSOR / \$175 - \$1,200

March 14, 2020 @ Beech Grove Middle School

JOB FAIR / \$175 - \$500

May 6, 2020 @ TBA

MUSIC ON MAIN / \$175 - \$1,200

August 29, 2020 @ Main Street in Beech Grove

ANNUAL DINNER / \$175 - \$1,500

November 5, 2020 @ Primo's South

OTHER OPPORTUNITIES

LUNCHEON SPONSOR/ \$250

Second Thursday of the month. Luncheon sponsors will enjoy their name and logo on all luncheon materials. They are also encouraged to speak at the luncheon and pass out information. Space is limited, reserve soon.

NONPROFIT OR SMALL BUSINESS LEARNING SERIES SPONSOR / \$1,600

Your business can provide a year long learning series geared toward nonprofit organizations or small businesses. Your name will appear on all advertising and printed materials and on social media.



EARLY BIRD PACKAGE



SPECIAL EARLY BIRD PACKAGE

\$450 BY FEB 1

\$550 BY MAR 1

This valuable package offers sponsorship for all four of our events. Put your business in front of thousands of potential customers all year long! Email us for details.

**GREATER
BEECH GROVE**
Chamber of Commerce



SPECIAL NETWORKING

Small Business Discussion Groups

Third Tuesday of the month at 9am - Chamber Office

Nonprofit Discussion Groups

Third Tuesday of the month at 12pm - Chamber Office

Register at BeechGroveChamber.org

2020 CALENDAR

GREATER BEECH GROVE CHAMBER OF COMMERCE

MONTHLY LUNCHEONS

January 9	Local Business Leader
February 13	The Art of Negotiation
March 12	State of the City
April 9	Hiring & Retention Panel
May 14	Branding & Design Panel
June 11	Emergency Preparedness
July 9	No Luncheon
August 13	State of the Schools
September 10	Political Leaders Panel
October 8	Mental Health
November 12	No Luncheon
December 10	Get Involved, Nonprofits

SPECIAL EVENTS

January	No Event
February 27	Breakfast Networking
March 14	Community Fair
April 23	Professional Headshots
May 6	Job Fair
June 24	After Hours Networking
July 23	Breakfast Networking
August 29	Music on Main
September 22	After Hours Networking
October 14	Speed Networking
November 5	Annual Dinner
December 16	Give Back Event

NONPROFIT LEARNING SERIES

January 22	Social Media for Nonprofits
March 25	Recruit & Retain Volunteers
April 22	Hosting Events
May 27	Fundraising
August 26	Program Evaluation
September 23	Create a Strategic Plan

SMALL BUSINESS LEARNING SERIES

February 26	Customer Service Training
May 28	Small Business Retirement
June 24	Cost Effective Marketing
August 25	Websites & SEO
September 22	Accounting Q&A
October 28	Preparing a Budget

OTHER OPPORTUNITIES

Small business discussion group, 3rd Tuesday of the month at 9am

Nonprofit discussion group, 3rd Tuesday of the month at 12pm

Membership 101, January, April, July, October.

Details and registration links can be found at BeechGroveChamber.org/calendar
Dates and topics are subject to change.

2020 Membership Tiers & Pricing				
Business Size		any	any	< 20 emp. < 6 emp.
Benefit Description	Partner	Gold	Silver	Classic
Business Assistance				
Online Business Analysis	✓	✓	✓	✓
Marketing Assistance	✓	✓	✓	✓
Small Business Learning Series	✓	✓	✓	✓
Nonprofit Learning Series	✓	✓	✓	✓
Business Networking				
Monthly Luncheon	✓	✓	\$10	\$10
Special Networking Events	✓	✓	\$5	\$5
Discussion Groups	✓	✓	✓	✓
Member Mailing List	✓	✓	✓	✓
Business Promotion				
Event Sponsorship Friend Level (3 events)	✓			
Member Promotional Video	✓			
E-Mail Signature Line Link	✓			
Monthly Luncheon Sponsorship	✓			
Business Logo on Chamber Home Page	✓			
Recognition by Board President/ED Meetings & Events	✓			
New Resident Welcome Bag	✓	✓	✓	✓
Newsletter -advertise events, promotions, internal news	✓	✓	✓	✓
Business Directory (print and digital)	✓	✓	✓	✓
Social Media Promotions	✓	✓	✓	✓
Shop Small Saturday Promotions	✓	✓	✓	✓
Business Logo on Banner at Chamber Events	✓	✓		
Enhanced online listing, link and logo	✓	✓		
Other Benefits of Chamber Membership				
Annual Dinner Tickets	8	4	2	n/a
Member to Member Benefits	✓	✓	✓	✓
Member to Member Emails	4	2		
Complimentary Vendor Space (Spring Fling & Music on Main)	✓	✓		
Anniversary Media Package	✓	✓		
Business Excellence Awards	✓	✓	✓	✓
Job Postings	✓	✓	✓	✓
Job Fair (May)	✓	✓	reduced	reduced
Credibility & Community Building				
Community Building & Growth	✓	✓	✓	✓
Credibility	✓	✓	✓	✓
Membership Plaque & Sticker	✓	✓	✓	✓
Yearly Investment	\$1,000	\$600	\$275	\$140